

PRODUCT

OIL/ WATER/ SOLIDS SEPARATOR ACCESSORIES

BOW SCREEN (STATIC SCREEN) & PORTABLE SOLIDS BASKET

PURPOSE

In many golf and bowling clubs, football and cricket grounds, turf farms and parkland areas, there have been problems in dealing with grass clippings that are washed from maintenance equipment during routine cleaning.

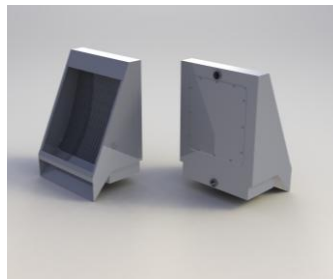
These clippings get into the waste water collection pits and clog up infrastructure, create bad odours and increase chemical deposits in the waste stream. A Clearmake Bow Screen has been designed to remove grass clippings and other larger solid contaminants from waste water prior to treatment and a Portable Solids Basket designed to capture the clippings off the Bow Screen making disposal cleaner and easier.



APPLICATIONS

Remove grass clippings to prevent clogged equipment, odour and increased chemical deposits in waste stream. Suitable for all commercial applications where grass and other suspended solids find its way into waste water streams. Examples include:

- Golf clubs
- Sports grounds ie. football ovals, cricket pitches
- Parkland areas and Council facilities
- Turf farms



"We recently chose to partner with Clearmake to design and manufacture a solution for us, as we get a lot of grass entering the system after we wash down our course machinery and equipment. The Bow Screen developed by Clearmake screens off the grass clippings from the wash-bay water and significantly reduces the volume that passes through the separator. This ensures that the waste water is able to be treated to a level suitable for discharge".

"We selected Clearmake because we have used their equipment before and because they were keen to work with the Golf Course Industry to come up with a solution for this problem. We are very pleased with the performance of the Bow Screen and I would recommend Clearmake to other industry facilities looking for a similar solution".

Pennant Hills Golf Club



SPECIFICATIONS

The Clearmake Bow Screen is most often attached to the front of a Clearmake Oil/Water/Solids Separator. Waste water is drawn from the collection pit and passed over the Bow Screen, where the clippings and other solids are screened off into the Portable Solids Basket for later removal. The water then passes through the separator. The Bow Screen is made from 304 stainless steel and the Portable Solids Basket from durable polyethylene with easy glide wheels.

21 Project Ave
Noosaville Q 4566

P 07 5455 6822
F 07 5455 6833

E info@clearmake.com.au
www.clearmake.com.au